

Wake™ Pro 230

Stability, power and music
to tow like a pro.



 Sand / Dazzling Blue

Rotax® 1630 ACE™ - 230		ST3™ Hull		BRP premium audio system		
CAPACITY		ROTAX ENGINE		1630 ACE™ - 230		
Rider capacity	3	Displacement	1,630 cc			
Weight capacity	272 kg	Power (hp)	230 hp			
Fuel capacity	70 L	Intake system	Supercharged with external intercooler			
Glove box	2.9 L	Cooling	Closed-Loop Cooling System (CLCS)			
Front bin	96 L	Reverse system	Electronic iBR®*			
Storage capacity - Total	98.9 L	Starter	Electric			
		Fuel type	95 octane			
		Throttle system	iTCT™ (Intelligent Throttle Control)			
		Exhaust System	D-Sea-Bel™ system			
DIMENSIONS		GAUGE				
Length (bumper to bumper)	345 cm	Type of gauge	10.25 in. touchscreen display with BRP Connect			
Width	125.5 cm (w/o rack)	Main functions	• BRP Connect • Music • Navigation • Bluetooth+ connectability • Speedometer • RPM			
Height	114 cm		• Clock • VTS™ • Fuel consumption • Fuel autonomy • Water temperature • Vehicle hours			
HULL		iTCT System - mode	• Sport mode • ECO® mode • Slow mode			
Type	ST3™ Hull		• Speed regulator • Ski mode			
Material	Fiberglass	WEIGHT				
		Dry weight (oil, coolant, no fuel)	379 kg			
		Power to weight ratio (HP / Kg)	0.61			
OTHER FEATURES		WARRANTY				
• Ergolock™ two-piece seat • Seat strap • iBR® - Intelligent Brake & Reverse • iDF - Intelligent Debris Free System • VTS™ (Variable Trim System) • Boarding ladder • RF D.E.S.S.™ key • Direct-Access Front Storage • Watertight phone compartment		BRP limited warranty covers the watercraft for two years.				
• LinQ™ attachment system • BRP Audio - premium system • Wide-angle mirrors • Handle Grips with palm rest • Footwell carpets • Large swim platform • USB Port • Tilt steering • Ski tow eye						

*Electronic brake, neutral and reverse.
† Wakeboard and rope not included. Wake Pro 230 shown.
‡ Bluetooth+ is a registered trademark owned by Bluetooth+ SIG, Inc. and any use of such trademarks by BRP is under license.

WHAT'S NEW

- 10.25 in. touchscreen display with BRP Connect

KEY FEATURES

- Rotax® 1630 ACE™ - 230
- ST3™ Hull
- BRP premium audio system
- iDF - Intelligent Debris-Free Pump System
- iBR® - Intelligent Brake & Reverse*
- Watertight phone compartment
- Direct-access front storage
- Boarding ladder
- LinQ retractable ski pylon
- Speed-based ski mode
- Removable wakeboard rack
- Wake™ graphics



 Sand and Dazzling Blue



10.25 in Touchscreen Display with BRP Connect

Bring your on-water experience to another level with this premium and elegant touchscreen display developed specifically for Sea-Doo riders. Enjoy enhanced connectivity and intuitive features including ride statistics, a compass, media control, marine navigation with the BRP GO! app and much more.



BRP Audio - premium system

A factory-installed, truly waterproof Bluetooth* audio system for an extra dose of fun and entertainment on the water.



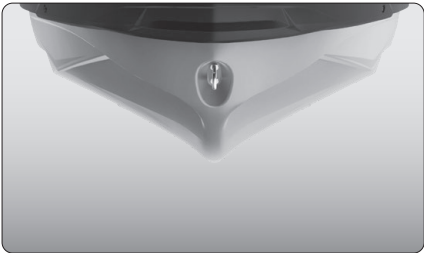
Watersport Essentials

Everything you need to practice watersports. A quick install retractable ski pylon that stows away when not in use. Features spotter hand grips and rope storage. A wakeboard rack provides convenient storage and transport of a wakeboard.¹



ROTAX® 1630 ACE™ - 230 ENGINE

This powerful engine comes standard with a supercharger and external intercooler. It is optimized to run on regular fuel, which lowers fuel costs.



ST3™ Hull

An innovative hull that sets the benchmark for rough water handling, stability, and offshore performance.⁴



Direct-Access Front Storage

All your gear within arm's reach thanks to a 96 L front storage area, easily accessible from a seated position. Simply raise the handlebars to access essentials for any adventure.