

# Explorer Pro<sup>®</sup> 170

The ultimate companion  
for any adventure




 Iceland Grey

Rotax<sup>®</sup> 1630 ACE™ - 170

ST3™ Hull

BRP premium audio system

CAPACITY

Rider capacity	
Weight capacity	273 kg
Rear Platform Capacity (Swim & Rear Deck Extension Capacity (without passenger))	100 kg
Fuel capacity	70 L
Glove box	2.9 L
Front bin	96 L
LinQ™ fishing cooler	
LinQ™ explorer bag	100 L
Storage capacity - Total	198.9 L*

DIMENSIONS

Length (bumper to bumper)	373.4 cm
Width	126 cm
Height	140 cm

HULL

Type	ST3™ Hull
Material	Fiberglass

OTHER FEATURES

<ul style="list-style-type: none"><li>Ergolock two-piece Explorer Touring seat</li><li>Seat strap</li><li>iBR<sup>®</sup> - Intelligent Brake &amp; Reverse</li><li>iDF - Intelligent Debris-Free Pump System</li><li>VTS™ (Variable Trim System)</li><li>Boarding ladder</li><li>RF D.E.S.S.™ key</li><li>Direct-access front storage</li><li>Watertight phone compartment</li><li>LinQ™ attachment system</li><li>BRP premium audio system</li><li>Knee pads</li></ul>	<ul style="list-style-type: none"><li>Wide angle mirrors</li><li>Handle Grips with palm rest</li><li>Footwell carpets</li><li>Large swim platform</li><li>Angled gunwale footrests</li><li>Rear Deck Extension</li><li>1 LinQ™ front support</li><li>Cupholder</li><li>USB Port</li><li>Hydraulic steering damper</li><li>Handlebar with adjustable riser</li><li>Tilt steering</li><li>Ski tow eye</li></ul>
--	---

ROTAX ENGINE

Displacement	1,630 cc
Power (hp)	170 hp
Intake system	Naturally aspirated
Cooling	Closed-Loop Cooling System (CLCS)
Reverse system	Electronic iBR***
Starter	Electric
Fuel type	95 octane
Throttle system	iTC™ (Intelligent Throttle Control)
Exhaust System	D-Sea-Bel™ system

GAUGE

Type of gauge	10.25 in. touchscreen display with BRP Connect	
Main functions	<ul style="list-style-type: none"><li>BRP Connect</li><li>Music</li><li>Navigation</li><li>Bluetooth* connectivity</li><li>Speedometer</li><li>RPM</li></ul>	<ul style="list-style-type: none"><li>Clock</li><li>VTS™</li><li>Fuel consumption</li><li>Fuel autonomy</li><li>Depth finder</li><li>Vehicle hours</li></ul>
	<ul style="list-style-type: none"><li>Sport mode</li><li>ECO<sup>®</sup> mode</li><li>Slow mode</li></ul>	<ul style="list-style-type: none"><li>Speed regulator</li><li>Accessory Mode</li></ul>
iTC System - mode		

WEIGHT

Dry weight (oil, coolant, no fuel)	399 kg
Power to weight ratio (HP / Kg)	0.43

WARRANTY

BRP limited warranty covers the watercraft for two years.

\*Total storage capacity includes LinQ™ Explorer bag  
\*\*Electronic brake, neutral and reverse.  
\*Bluetooth\* is a registered trademark owned by Bluetooth\* SIG, Inc. and any use of such trademarks by BRP is under license.



WHAT'S NEW

- 10.25 in. touchscreen display with BRP Connect

KEY FEATURES

- Rotax® 1630 ACE™ - 170
- ST3™ Hull
- BRP premium audio system
- iDF - Intelligent Debris-Free Pump System
- Touring Windshield
- Heavy-Duty Grab Handles
- Adjustable handlebar riser
- Explorer Touring seat and knee pads
- Gunwale footrests
- LinQ™ Multi Cargo Rack
- LinQ™ Explorer Bag
- Rear Deck Extension
- Hydraulic Steering Damper



Iceland Grey



Touring Windshield

An industry-first that reduces noise and fatigue associated with prolonged wind pressure whilst also protecting against splashing and salt water exposure when riding offshore.



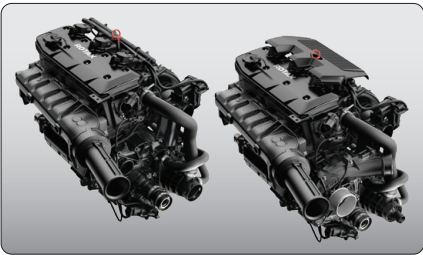
Extended Riding Comfort

With extended riding duration in mind, the Explorer Touring seat and knee pads, adjustable riser handlebars and gunwale footrests provide ultimate extended riding comfort.



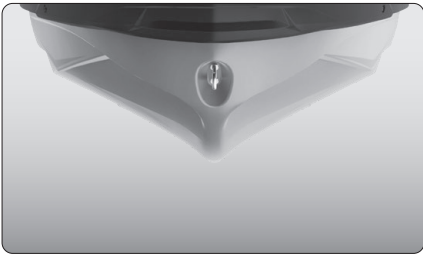
LinQ™ Explorer Bag

Keep extra gear dry and easily accessible with this 100 L. bag. This exclusive LinQ compatible accessory is waterproof, functional and portable. It can be stacked on the LinQ plate/ LinQ accessories or carried as a backpack.



ROTAX® 1630 ACE™ - 170

The 170hp engine boasts naturally aspirated punch with optimal fuel economy



ST3™ Hull

An innovative hull that sets the benchmark for rough water handling, stability, and offshore performance.<sup>4</sup>



Rear Deck Extension with LinQ attachment system and Multi Cargo Rack

The rear deck extension adds 29 cm to the back of the watercraft to increase stability, space, and storage capability. Enhance your storage capacity with the LinQ Multi Cargo Rack.

# Explorer Pro<sup>®</sup> 230

The ultimate companion  
for any adventure




 Iceland Grey

Rotax<sup>®</sup> 1630 ACE™ - 230

ST3™ Hull

BRP premium audio system

CAPACITY

Rider capacity	
Weight capacity	273 kg
Rear Platform Capacity (Swim & Rear Deck Extension Capacity (without passenger))	100 kg
Fuel capacity	70 L
Glove box	2.9 L
Front bin	96 L
LinQ™ fishing cooler	
LinQ™ explorer bag	100 L
Storage capacity - Total	198.9 L*

DIMENSIONS

Length (bumper to bumper)	373.4 cm
Width	126 cm
Height	140 cm

HULL

Type	ST3™ Hull
Material	Fiberglass

OTHER FEATURES

<ul style="list-style-type: none"><li>Ergolock two-piece Explorer Touring seat</li><li>Seat strap</li><li>iBR<sup>®</sup> - Intelligent Brake &amp; Reverse</li><li>iDF - Intelligent Debris-Free Pump System</li><li>VTS™ (Variable Trim System)</li><li>Boarding ladder</li><li>RF D.E.S.S.™ key</li><li>Direct-access front storage</li><li>Watertight phone compartment</li><li>LinQ™ attachment system</li><li>BRP premium audio system</li><li>Knee pads</li></ul>	<ul style="list-style-type: none"><li>Wide angle mirrors</li><li>Handle Grips with palm rest</li><li>Footwell carpets</li><li>Large swim platform</li><li>Angled gunwale footrests</li><li>Rear Deck Extension</li><li>1 LinQ™ front support</li><li>Cupholder</li><li>USB Port</li><li>Hydraulic steering damper</li><li>Handlebar with adjustable riser</li><li>Tilt steering</li><li>Ski tow eye</li></ul>
--	---

ROTAX ENGINE

Displacement	1,630 cc
Power (hp)	230 hp
Intake system	Supercharged with external intercooler
Cooling	Closed-Loop Cooling System (CLCS)
Reverse system	Electronic iBR***
Starter	Electric
Fuel type	95 octane
Throttle system	iTC™ (Intelligent Throttle Control)
Exhaust System	D-Sea-Bel™ system

GAUGE

Type of gauge	10.25 in. touchscreen display with BRP Connect	
Main functions	<ul style="list-style-type: none"><li>BRP Connect</li><li>Music</li><li>Navigation</li><li>Bluetooth* connectivity</li><li>Speedometer</li><li>RPM</li></ul>	<ul style="list-style-type: none"><li>Clock</li><li>VTS™</li><li>Fuel consumption</li><li>Fuel autonomy</li><li>Depth finder</li><li>Vehicle hours</li></ul>
	<ul style="list-style-type: none"><li>Sport mode</li><li>ECO<sup>®</sup> mode</li><li>Slow mode</li></ul>	<ul style="list-style-type: none"><li>Speed regulator</li><li>Accessory Mode</li></ul>
iTC System - mode		

WEIGHT

Dry weight (oil, coolant, no fuel)	416 kg
Power to weight ratio (HP / Kg)	0.55

WARRANTY

BRP limited warranty covers the watercraft for two years.

\*Total storage capacity includes LinQ™ Explorer bag  
\*\*Electronic brake, neutral and reverse.  
\*Bluetooth\* is a registered trademark owned by Bluetooth® SIG, Inc. and any use of such trademarks by BRP is under license.



WHAT'S NEW

- 10.25 in. touchscreen display

KEY FEATURES

- Rotax® 1630 ACE™ - 230
- ST3™ Hull
- BRP premium audio system
- iDF - Intelligent Debris-Free Pump System
- Touring Windshield
- Heavy-Duty Grab Handles
- Adjustable handlebar riser
- Explorer Touring seat and knee pads
- Gunwale footrests
- LinQ™ Multi Cargo Rack
- LinQ™ Explorer Bag
- Rear Deck Extension
- Hydraulic Steering Damper



Iceland Grey



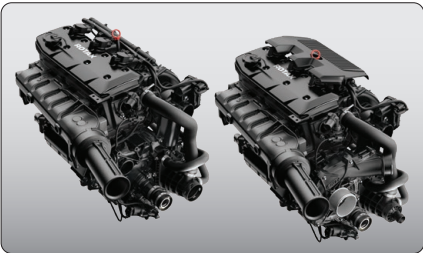
**Touring Windshield**  
An industry-first that reduces noise and fatigue associated with prolonged wind pressure whilst also protecting against splashing and salt water exposure when riding offshore.



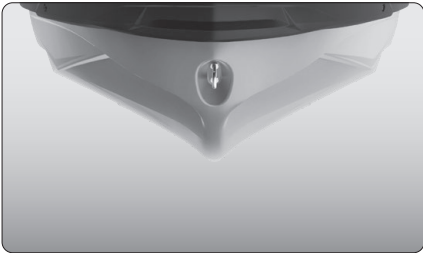
**Extended Riding Comfort**  
With extended riding duration in mind, the Explorer Touring seat and knee pads, adjustable riser handlebars and gunwale footrests provide ultimate extended riding comfort.



**LinQ™ Explorer Bag**  
Keep extra gear dry and easily accessible with this 100 L. bag. This exclusive LinQ™ compatible accessory is waterproof, functional and portable. It can be stacked on the LinQ™ plate/ LinQ™ accessories or carried as a backpack.



**ROTAX® 1630 ACE™ - 230**  
The 230hp engine with a supercharger and external intercooler, optimized to run on regular fuel.



**ST3™ Hull**  
An innovative hull that sets the benchmark for rough water handling, stability, and offshore performance.<sup>4</sup>



**Rear Deck Extension with LinQ™ attachment system and Multi Cargo Rack**  
The rear deck extension adds 29 cm to the back of the watercraft to increase stability, space, and storage capacity. Enhance your storage capacity with the LinQ™ Multi Cargo Rack.