

# GTX<sup>+</sup> 170

Comfort, control and power are always in style.



Blue Abyss / Gulfstream Blue

Rotax® 1630 ACE™ - 170

ST3™ Hull

iDF - Intelligent Debris-Free Pump System

CAPACITY	
Rider capacity	3
Weight capacity	273 kg
Fuel capacity	70 L
Glove box	2.9 L
Front bin	96 L
Storage capacity - Total	98.9 L

DIMENSIONS	
Length (bumper to bumper)	345.1 cm
Width	125 cm
Height	114 cm

HULL	
Type	ST3™ Hull
Material	Fiberglass

OTHER FEATURES	
<ul style="list-style-type: none"><li>Ergolock™ two-piece seat with stepped design</li><li>Seat strap</li><li>iBR® - Intelligent Brake &amp; Reverse</li><li>iDF - Intelligent Debris Free System</li><li>VTS™ (Variable Trim System)</li><li>Boarding ladder</li><li>RF D.E.S.S.™ key</li><li>Direct-Access Front Storage</li></ul>	<ul style="list-style-type: none"><li>Watertight phone compartment</li><li>LinQ™ attachment system</li><li>BRP Audio - premium system (optional)</li><li>Wide-angle mirrors</li><li>Handle Grips with palm rest</li><li>Footwell carpets</li><li>Large swim platform</li><li>Tilt steering</li><li>Ski tow eye</li></ul>

ROTAX ENGINE	1630 ACE™ - 170
Displacement	1,630 cc
Power (hp)	170 hp
Intake system	Naturally aspirated
Cooling	Closed-Loop Cooling System (CLCS)
Reverse system	Electronic iBR®*
Starter	Electric
Fuel type	95 octane
Throttle system	iTC™ (Intelligent Throttle Control)
Exhaust System	D-Sea-Bel™ system

GAUGE	
Type of gauge	7.6" wide digital display
Main functions	<ul style="list-style-type: none"><li>Speedometer</li><li>RPM</li><li>Clock</li></ul> <ul style="list-style-type: none"><li>VTS™</li><li>Fuel autonomy</li><li>Vehicle hours</li></ul>
iTC System - mode	<ul style="list-style-type: none"><li>Sport mode</li><li>ECO® mode</li></ul> <ul style="list-style-type: none"><li>Slow mode</li><li>Speed regulator</li></ul>

WEIGHT	
Dry weight (oil, coolant, no fuel)	352 kg
Power to weight ratio (HP / Kg)	0.48

WARRANTY
BRP limited warranty covers the watercraft for two years.

\*Electronic brake, neutral and reverse.  
1 Bin organizers are not included.  
†GTX is a trademark of Castrol Limited used under license.  
‡Bluetooth® is a registered trademark owned by Bluetooth® SIG, Inc. and any use of such trademarks by BRP is under license.

## KEY FEATURES

- Rotax® 1630 ACE™ - 170
- ST3™ Hull
- iDF - Intelligent Debris-Free Pump System
- iBR® - Intelligent Brake & Reverse\*
- Variable Trim System (VTS™)
- LinQ™ attachment system
- Boarding ladder
- Direct-access front storage
- Watertight phone compartment



Blue Abyss and Gulfstream Blue



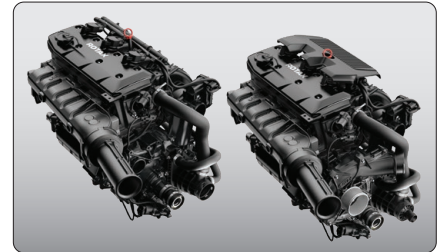
### iDF - Intelligent Debris Free system

An innovative, industry-first system that allows you to free your pump of weeds and debris with intuitive handlebar-activated controls.



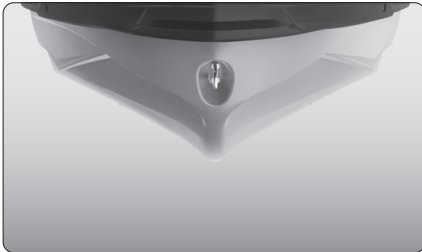
### Swim platform with integrated LinQ™ system

Exclusive quick-attach system on the largest swim platform in the industry that allows for easy installation of accessories.



### ROTAX® 1630 ACE™ - 170

The Rotax® 1630 ACE engine block is offered in two configurations on this versatile platform. The 170hp boasts naturally aspirated punch with optimal fuel economy.



### ST3™ Hull

An innovative hull that sets the benchmark for rough water handling, stability, and offshore performance.<sup>4</sup>



### Direct-Access Front Storage

All your gear within arm's reach thanks to a 96 L front storage area, easily accessible from a seated position. Simply raise the handlebars to access essentials for any adventure.

# GTX<sup>†</sup> 230

Comfort, control and power are always in style.



Blue Abyss / Gulfstream Blue

Rotax® 1630 ACE™ - 230

ST3™ Hull

iDF - Intelligent Debris-Free Pump System

CAPACITY

Rider capacity	3
Weight capacity	273 kg
Fuel capacity	70 L
Glove box	2.9 L
Front bin	96 L
Storage capacity - Total	98.9 L

DIMENSIONS

Length (bumper to bumper)	345.1 cm
Width	125 cm
Height	114 cm

HULL

Type	ST3™ Hull
Material	Fiberglass

OTHER FEATURES

<ul style="list-style-type: none"><li>Ergolock™ two-piece seat with stepped design</li><li>Seat strap</li><li>iBR® - Intelligent Brake &amp; Reverse</li><li>iDF - Intelligent Debris Free System</li><li>VTS™ (Variable Trim System)</li><li>Boarding ladder</li><li>RF D.E.S.S.™ key</li><li>Direct-Access Front Storage</li><li>Watertight phone compartment</li><li>LinQ™ attachment system</li></ul>	<ul style="list-style-type: none"><li>BRP Audio - premium system (optional or standard standard with Gulfstream Blue Premium)</li><li>Wide-angle mirrors</li><li>Handle Grips with palm rest</li><li>Footwell carpets</li><li>Large swim platform</li><li>USB Port (standard with Gulfstream Blue Premium)</li><li>Tilt steering</li><li>Ski tow eye</li></ul>
---	--

ROTAX ENGINE

Displacement	1,630 cc
Power (hp)	230 hp
Intake system	Supercharged with external intercooler
Cooling	Closed-Loop Cooling System (CLCS)
Reverse system	Electronic iBR®*
Starter	Electric
Fuel type	95 octane
Throttle system	iTC™ (Intelligent Throttle Control)
Exhaust System	D-Sea-Bel™ system

1630 ACE™ - 230

GAUGE

Type of gauge	7.6" wide digital display, 7.8" wide LCD display (standard with Gulfstream Blue Premium)	
Main functions	<ul style="list-style-type: none"><li>BRP Connect (standard with Gulfstream Blue Premium)</li><li>Music (standard with Gulfstream Blue Premium)</li><li>Navigation (standard with Gulfstream Blue Premium)</li><li>Bluetooth+ connectivity (standard with Gulfstream Blue Premium)</li></ul>	<ul style="list-style-type: none"><li>Speedometer</li><li>RPM</li><li>Clock</li><li>VTS™</li><li>Fuel consumption (standard with Gulfstream Blue Premium)</li><li>Fuel autonomy</li><li>Vehicle hours</li></ul>
iTC System - mode	<ul style="list-style-type: none"><li>Sport mode</li><li>ECO® mode</li></ul>	<ul style="list-style-type: none"><li>Slow mode</li><li>Speed regulator</li></ul>

WEIGHT

Dry weight (oil, coolant, no fuel)	367 kg 376 kg (standard with Gulfstream Blue Premium)
Power to weight ratio (HP / Kg)	0.63

WARRANTY

BRP limited warranty covers the watercraft for two years.

\*Electronic brake, neutral and reverse.  
1 Bin organizers are not included.  
†GTX is a trademark of Castrol Limited used under license.  
‡Bluetooth is a registered trademark owned by Bluetooth SIG, Inc. and any use of such trademarks by BRP is under license.



KEY FEATURES

- Rotax® 1630 ACE™ - 230
- ST3™ Hull
- iDF - Intelligent Debris-Free Pump System
- iBR® - Intelligent Brake & Reverse\*
- Variable Trim System (VTS™)
- LinQ™ attachment system
- Boarding ladder
- Direct-access front storage
- Watertight phone compartment
- Tech Package (standard with Gulfstream Blue Premium):  
BRP Audio - premium system & Full color 7.8" wide display, USB port
- BRP Audio - premium system (standard with Gulfstream Blue Premium)



Blue Abyss and Gulfstream Blue



**iDF - Intelligent Debris Free system**

An innovative, industry-first system that allows you to free your pump of weeds and debris with intuitive handlebar-activated controls.



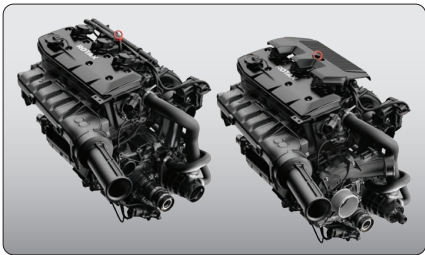
**Tech Package (standard with Gulfstream Blue Premium)**

Levels up entertainment and functionality on the water. It includes a factory-installed, truly waterproof Bluetooth® audio system, a 7.8" color display and a usb port.



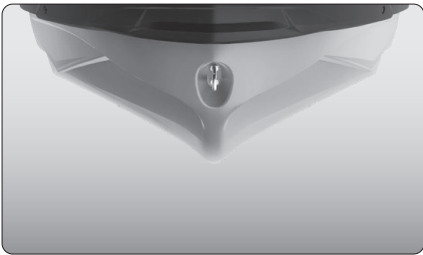
**Swim platform with integrated LinQ™ system**

Exclusive quick-attach system on the largest swim platform in the industry that allows for easy installation of accessories.



**ROTAX® 1630 ACE™ - 230**

The Rotax® 1630 ACE engine block is offered in two configurations on this versatile platform. The 230 hp supercharged version allows you to level up the performance to your liking.



**ST3™ Hull**

An innovative hull that sets the benchmark for rough water handling, stability, and offshore performance.<sup>4</sup>



**Direct-Access Front Storage**

All your gear within arm's reach thanks to a 96 L front storage area, easily accessible from a seated position. Simply raise the handlebars to access essentials for any adventure.