

# RXP-X<sup>®</sup> RS 325

Race-ready performance watercraft, reimagined.




- NEW Gulfstream Blue Premium
- Ice Metal / Manta Green

Rotax<sup>®</sup> 1630 ACE<sup>™</sup> - 325

T3-R<sup>™</sup> Hull

Launch control

CAPACITY

Rider capacity	 (up to 2 riders with passenger accessory seat)
Weight capacity	182 kg
Fuel capacity	70 L
Glove box	9.7 L
Front bin	143 L
Storage capacity - Total	153.7 L

DIMENSIONS

Length (bumper to bumper)	332 cm
Width	125 cm
Height	111 cm

HULL

Type	T3-R <sup>™</sup> Hull
Material	Fiberglass

OTHER FEATURES

- Ergolock<sup>™</sup> R racing seat
  - iBR<sup>®</sup> - Intelligent Brake & Reverse
  - Extended VTS<sup>™</sup> (Variable Trim System)
  - RF D.E.S.S.<sup>™</sup> key
  - Large front storage
  - Watertight phone compartment
  - LinQ<sup>™</sup> attachment system
  - BRP Audio - premium system (standard with Gulfstream Blue Premium, optional on Ice Metal / Manta Green)
  - Wide-angle mirrors
- Round handle grips
  - Footwell carpets
  - Large swim platform
  - Stainless Polished impeller
  - USB port (standard on Gulfstream Blue Premium, optional on Ice Metal / Manta Green)
  - X-sponsons
  - Double-angled footwell wedges
  - Hydraulic steering damper
  - Carbon fiber hood
  - Low-rise racing handlebars
  - Tow hook

ROTAX ENGINE

	1630 ACE <sup>™</sup> - 325
Displacement	1,630 cc
Power (hp)	325 hp
Intake system	Supercharged with external intercooler
Cooling	Closed-Loop Cooling System (CLCS)
Reverse system	Electronic iBR <sup>®</sup> *
Starter	Electric
Fuel type	98 octane
Throttle system	iTC <sup>™</sup> (Intelligent Throttle Control)
Exhaust System	D-Sea-Bel <sup>™</sup> system

GAUGE

Type of gauge	7.6" wide digital display (on Ice Blue / manta Green), 10.25" in. touchscreen display with BRP Connect (on Gulfstream Blue Premium)
Main functions	<div><ul style="list-style-type: none"><li>BRP Connect (standard with Gulfstream Blue Premium)</li><li>Music (standard with Gulfstream Blue Premium)</li><li>Navigation (standard with Gulfstream Blue Premium)</li><li>Bluetooth<sup>+</sup> connectivity (standard with Gulfstream Blue Premium)</li></ul></div> <div><ul style="list-style-type: none"><li>Speedometer</li><li>RPM</li><li>Clock</li><li>Extended VTS<sup>™</sup></li><li>Fuel consumption (standard with Gulfstream Blue Premium)</li><li>Fuel autonomy</li><li>Top speed and average speed</li><li>Vehicle hours</li></ul></div>
iTC System - mode	<div><ul style="list-style-type: none"><li>Sport mode</li><li>ECO<sup>®</sup> mode</li><li>Slow mode</li></ul></div> <div><ul style="list-style-type: none"><li>Speed regulator</li><li>Launch control</li></ul></div>

WEIGHT

Dry weight (oil, coolant, no fuel)	353 kg
Power to weight ratio (HP / Kg)	0.92

WARRANTY

BRP limited warranty covers the watercraft for two years.

\*Electronic brake, neutral and reverse.  
+Bluetooth<sup>®</sup> is a registered trademark owned by Bluetooth<sup>®</sup> SIG, Inc. and any use of such trademarks by BRP is under license.

## WHAT'S NEW

- 10.25 in. touchscreen display with BRP Connect (standard with Gulfstream Blue Premium)

## KEY FEATURES

- Rotax® 1630 ACE™ - 325
- T3-R™ Hull
- Launch control
- Ergolock™ R racing seat
- Low-rise racing handlebar
- Double-angled footwell wedges
- X-sponsons
- Stainless Polished Impeller
- Carbon fiber hood
- Hydraulic steering damper
- Tech Package (on Gulfstream Blue Premium model): BRP Audio - premium system, 10.25 in. touchscreen display with BRP Connect and USB Port



● NEW Gulfstream Blue Premium



● Ice Metal and Manta Green



#### ROTAX® 1630 ACE™ - 325 ENGINE

The Rotax® 1630 ACE™-325 is the industry's most powerful PWC engine from factory. With its 325hp, this engine delivers incredible acceleration and power thanks to innovative engineering for uncompromised offshore performance.



#### Hydraulic Steering Damper

3 steering positions to quickly control the stiffness. It adds riding precision by removing undesired input in rougher conditions. It provides a premium feeling and improved control to the rider.



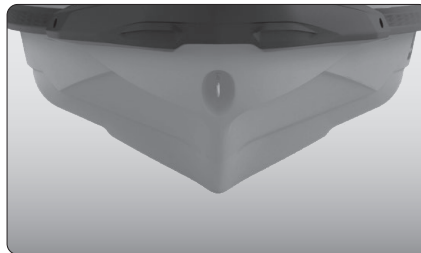
#### Tech Package with 10.25" Touchscreen Display (on Gulfstream Blue Premium model)

Levels up entertainment and connectivity on the water. It includes a factory-installed, truly waterproof Bluetooth® audio system, a 10.25" touchscreen display with BRP Connect and a usb port.



#### Ergolock™ R system

A narrow seat profile with deep knee pockets and a revolutionary adjustable saddle that allows riders to lock in to the machine like never before.



#### T3-R™ Hull

A deep-V design that offers unrivaled handling and acceleration and a new level of control at high speed.



#### Large front storage

An impressive 144 L. of sealed storage space allows riders to safely stow belongings while riding.